

Presentation of the Chamber Promotion Project

Prof. Dr. Karl Hasenritter
Haktan Akin
Gaye Dayday



Created by: Gaye DAYDAY E-Mail:
gdayday@iso.org.tr Web-Site:



PROJECT GOAL



**The Services of the Chamber is
in accordance with national and international
requests, especially concerning
Customs Union with the EU**



Created by: Gaye DAYDAY E-Mail:
gdayday@iso.org.tr Web-Site:

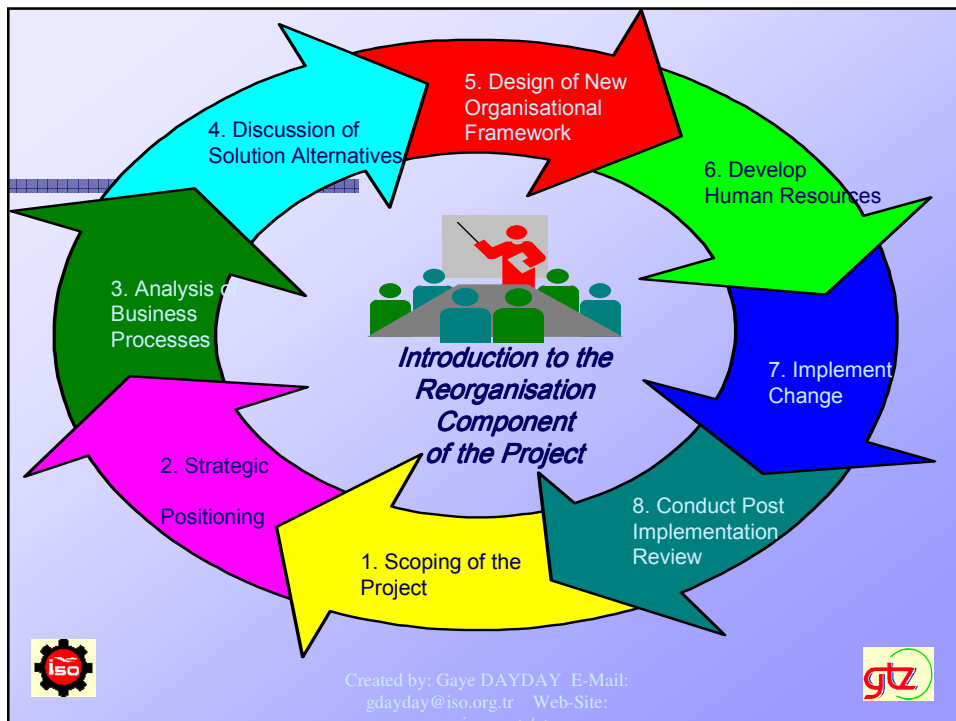


REORGANISATION

The Chamber is reorganised in line
with international / national standards
and is in a position to deliver
services of strategic importance to its members



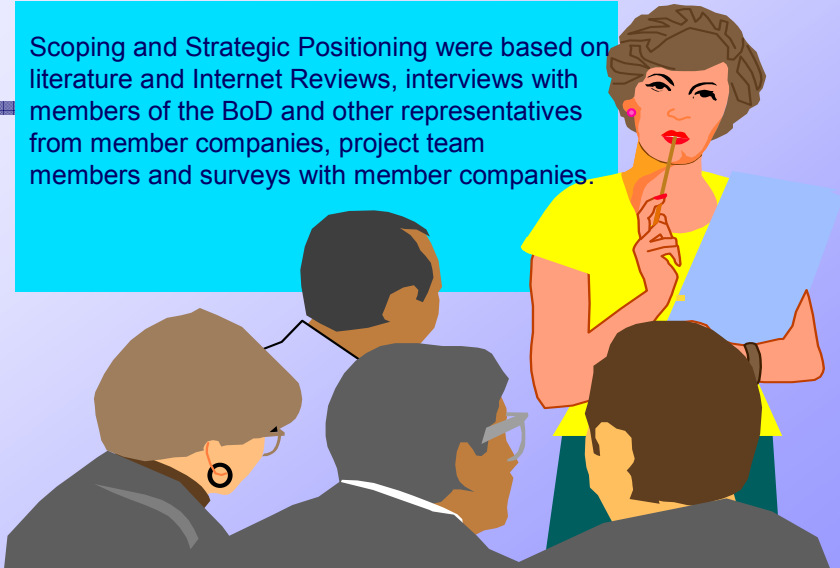
Created by: Gaye DAYDAY E-Mail:
gdayday@iso.org.tr Web-Site:





Created by: Gaye DAYDAY E-Mail:
gdayday@iso.org.tr Web-Site:



Scoping and Strategic Positioning were based on literature and Internet Reviews, interviews with members of the BoD and other representatives from member companies, project team members and surveys with member companies.



Created by: Gaye DAYDAY E-Mail: gdayday@iso.org.tr Web-Site: www.iso.org.tr/dtda



Process of Organisation Development characterised by



Achieving consensus between the different actors on the scope and direction of change.

Just in time participation of the staff and qualification measures during the process of organisational change created motivation towards change in most of the service



as.

Created by: Gaye DAYDAY E-Mail: gdayday@iso.org.tr Web-Site:



Top Down Approach for Three Types of Change in the Partner Institution



Future Staffing

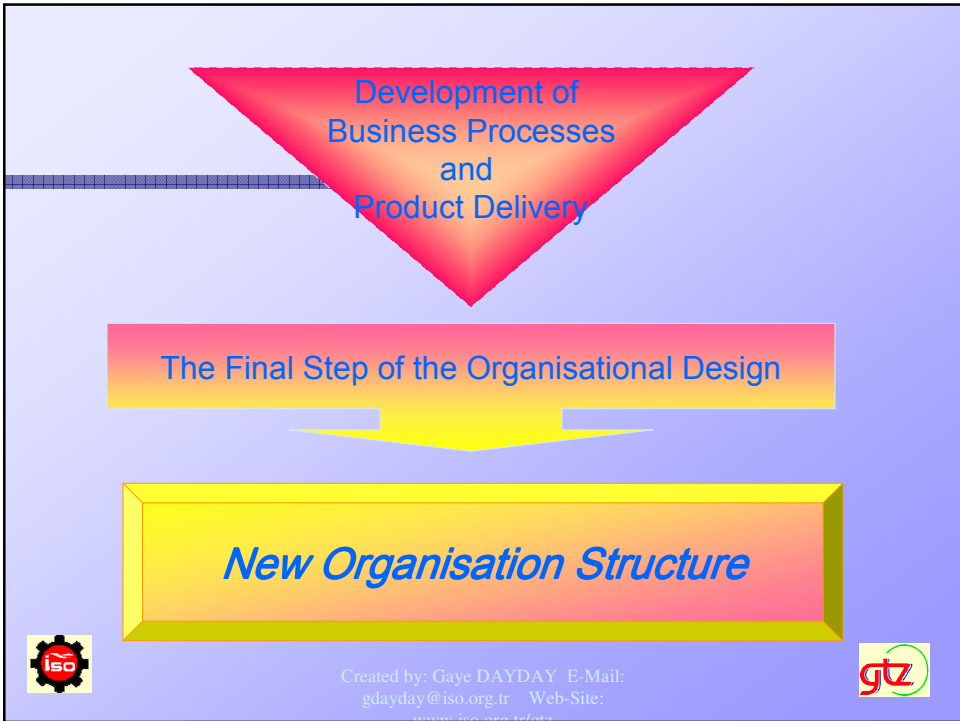
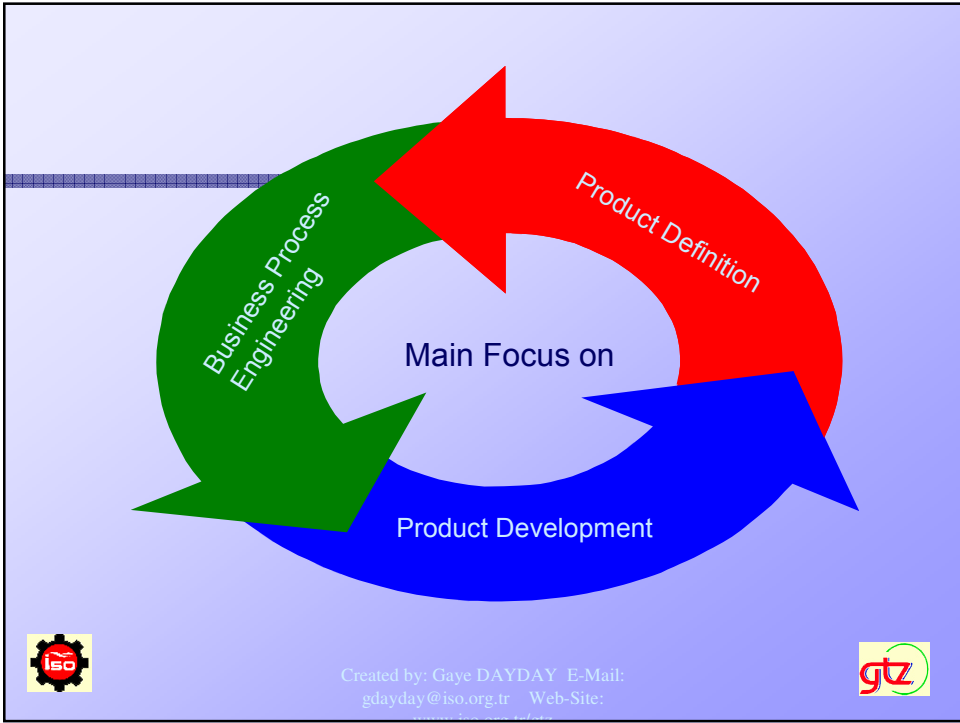
Salary Incentives System

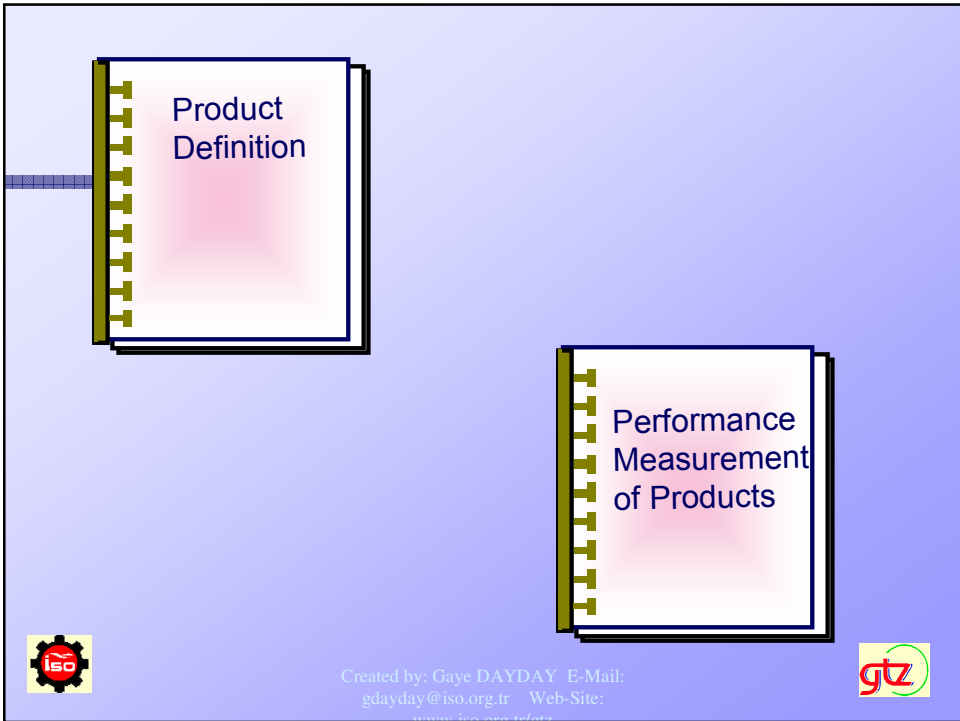
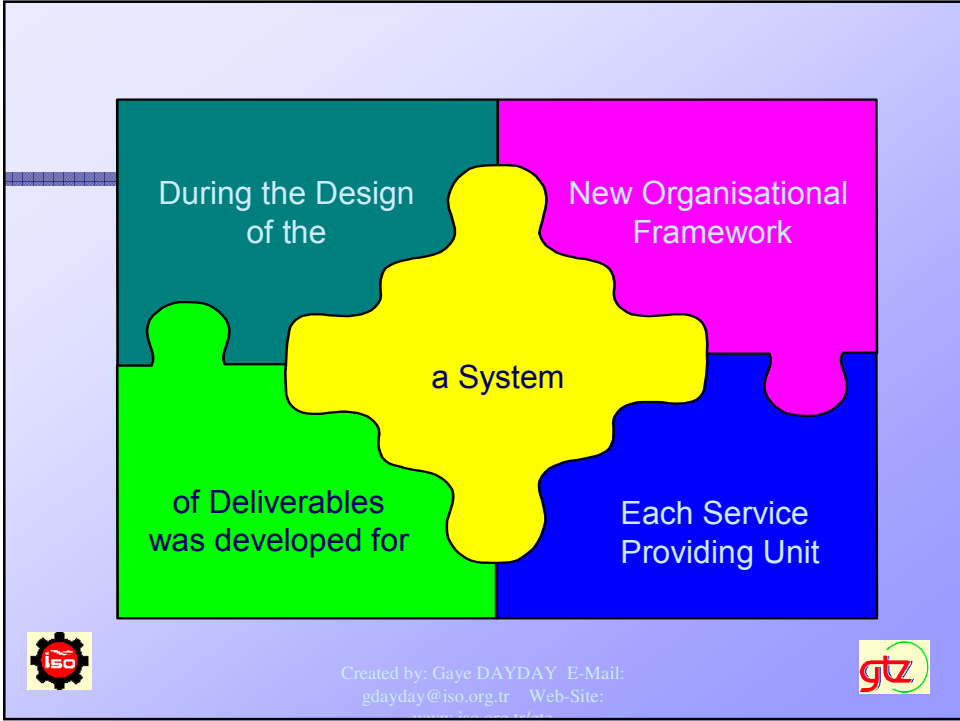
Future Organisation Structure

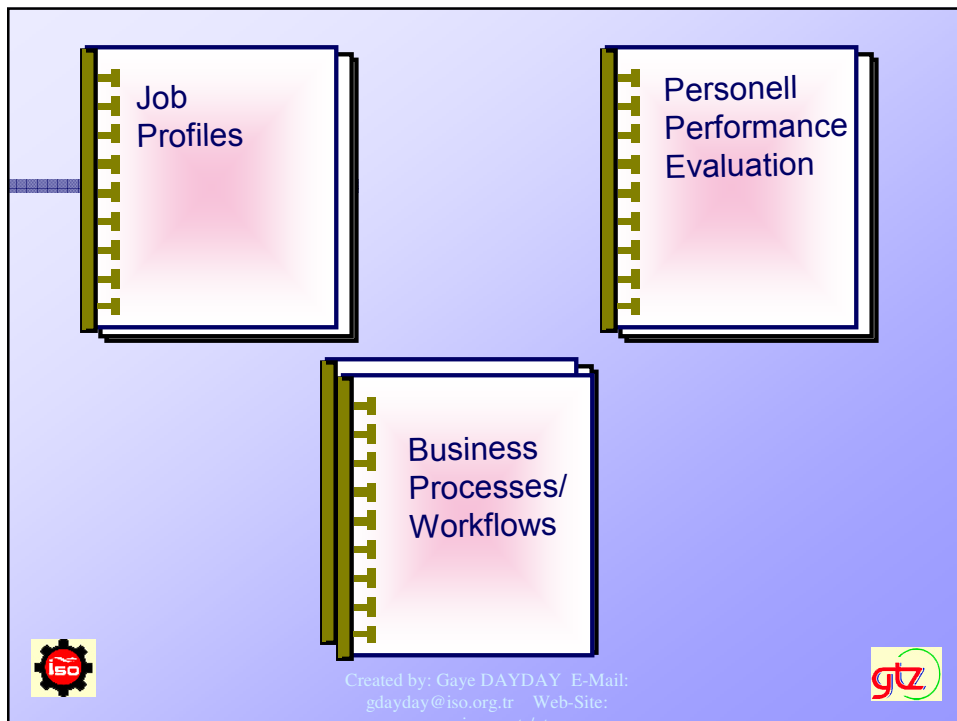
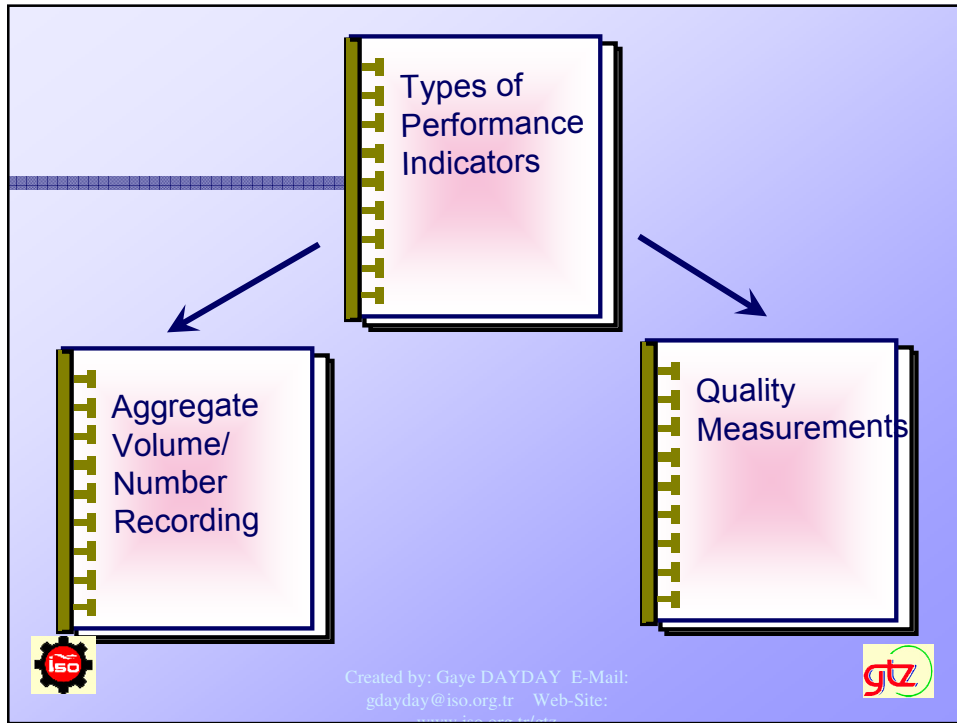


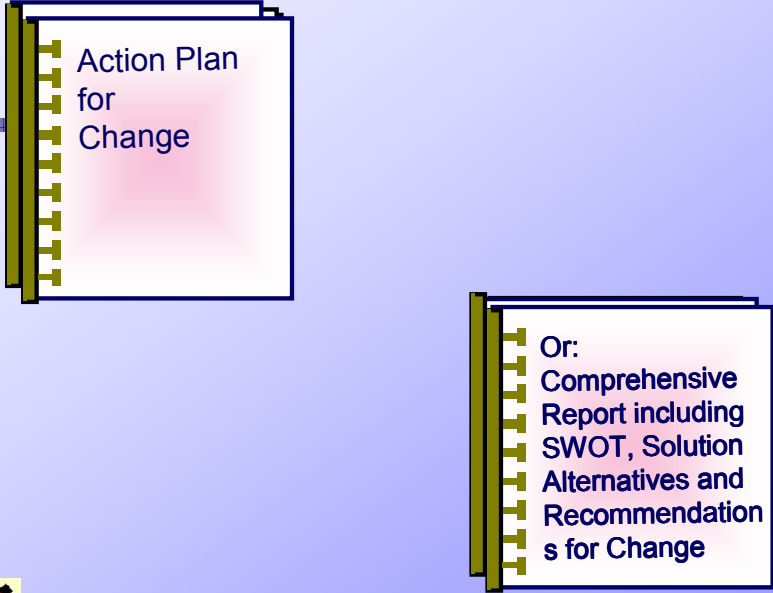
Created by: Gaye DAYDAY E-Mail: gdayday@iso.org.tr Web-Site:













Action Plan
for
Change

Or:
Comprehensive
Report including
SWOT, Solution
Alternatives and
Recommendation
s for Change



Created by: Gaye DAYDAY E-Mail:
gdayday@iso.org.tr Web-Site:




Example COMPANY COOPERATION

Important Products: Establishment of ...

- Joint Ventures
- Licence Agreement
- Job Processing
- Trade Agreement

Volume and Quality Measurement:
Comparison between accepted cooperation requests and number of cooperations achieved.
Customer satisfaction survey.



Created by: Gaye DAYDAY E-Mail:
gdayday@iso.org.tr Web-Site:



COMPANY COOPERATION

Job Profile

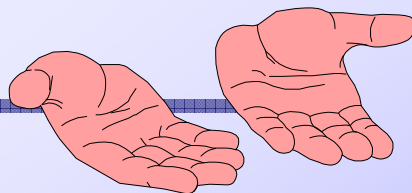
- Knowledge of major industrial products.
- Ability to describe the function of product groups to potential cooperation partners with verbal and other means

Action Plan

- Develop reporting format for company profiles



Created by: Gaye DAYDAY E-Mail:
gdayday@iso.org.tr Web-Site:



After three years of project life cycle the design work is finalised and substantial parts of the implementation have been done.

Other parts of the implementation are still missing.

There are doubts that the system could be fully implemented and sustained without an outphasing period of further assistance and monitoring by the GTZ.



Created by: Gaye DAYDAY E-Mail:
gdayday@iso.org.tr Web-Site:



TRAINING

The staff of the Chamber has been trained according new demands

- **Comprehensive Training Programs for the staff of the Computer Center. In financial terms this was the biggest training portion**
- **2 training courses on Internet Usage and Internet Search Engines Usage for 35 participants. Internet usage for Chamber related services with 17 participants**
- **Word and Excel Training for 50 participants**



Created by: Gaye DAYDAY E-Mail:
gdayday@iso.org.tr Web-Site:



TRAINING

- **Short term training courses on Strategic Management, Risk Management, Time Management, Critical Path Method, MS Project, Re-Engineering of Business Processes held for members of the Project Team (Average of 10 participants)**
- **3 Marketing courses with altogether 31 participants**



Created by: Gaye DAYDAY E-Mail:
gdayday@iso.org.tr Web-Site:



TRAINING

- **Project Management and Monitoring for 19 staff members**
- **Training Measures for individuals in the areas of Human Resources Development and Quality Management**



Created by: Gaye DAYDAY E-Mail:
gdayday@iso.org.tr Web-Site:



COMPANY COOPERATION

**Cooperation between
German/European and Turkish Companies
established**



Created by: Gaye DAYDAY E-Mail:
gdayday@iso.org.tr Web-Site:



COMPANY COOPERATION

- Under the leadership of GTZ/DEG 12 cooperation agreements have been established between 1.5.1997 and 30.8.1998
- ISO itself established Cooperation agreements since 1.9.1998 with minor assistance from GTZ



Created by: Gaye DAYDAY E-Mail:
gdayday@iso.org.tr Web-Site:



INFORMATION TECHNOLOGIES

The advanced usage of information technologies allows for a comprehensive internal and external exchange of information



Created by: Gaye DAYDAY E-Mail:
gdayday@iso.org.tr Web-Site:



INFORMATION TECHNOLOGIES

- **Complete Cabling, machine and software replacement**
- **Local area network environment established**
- **MS Office set and office automation introduced to whole staff**
- **Computerized fax services**



Created by: Gaye DAYDAY E-Mail:
gdayday@iso.org.tr Web-Site:



INFORMATION TECHNOLOGIES

- **CD ROM Exporters Data Base and Query System**
- **Intranet solution for internal information exchange and information exchange between Chambers in Istanbul, Kayseri and Gaziantep**
- **Internet access, internal and external e-mail functions**



Created by: Gaye DAYDAY E-Mail:
gdayday@iso.org.tr Web-Site:



INFORMATION TECHNOLOGIES

- Access to Library Catalogue
- Access to CD ROM Server and CD ROMs from inside and outside of the Chamber
- Build up of Information Broker Competence by securing access to professional Internet services and CD ROMs



Created by: Gaye DAYDAY E-Mail:
gdayday@iso.org.tr Web-Site:



New Page 10 - Microsoft Internet Explorer provided by ATLAS ON-LINE

File Edit View Go Favorites Help

Back Forward Stop Refresh Home Search Favorites History Channels Fullscreen Mail Print Edit

Address http://kutuphane.iso.org.tr/ Links

İSTANBUL SANAYİ ODASI

Kütüphane Hizmetleri

[ISO Ana Sayfa](#) [Kütüphane Ana Sayfa](#) [Kütüphane Saatleri](#) [Kütüphane Hakkında](#) [Erişim Bilgileri](#)

[Dış Bilgi Kaynakları](#) [CD Kütüphanesi](#) [Yayın Tarama](#) [Yardım](#)

- CD kütüphanesi ve Yayın Tarama fonksiyonlarını kullanabilmek için önce bu bağlantıyı izlemeniz gerekiyor.

Bu sayfalar İstanbul Sanayi Odası Bilgi İşlem Merkezince hazırlanmıştır.
1999

INFORMATION TECHNOLOGIES

- Electronic Archiving, retrieval and processing of membership documents introduced.
- Electronic processing of incoming post introduced in Membership, Foreign Trade and Industry Divisions
- Electronic processing of outgoing post introduced in Foreign Trade Division



Created by: Gaye DAYDAY E-Mail:
gdayday@iso.org.tr Web-Site:



Belge Tarama (Üye Adayı)

Tarama Görünüm Hakkında

Belge Tarama

Firma

Sic. Memurluğu: İSTANBUL Tic. Sic. No: 0000343048

Firma Ünvanı: HAK-PA TEKSTİL İNŞAAT SAN VE TİC LTD. ŞTİ.

İşlem

İşlem Numarası: 25

Başvuru Tarihi: 27.08.1999 Son Belge Teslimi: 27.08.1999

Belgeler

<input checked="" type="checkbox"/> Başvuru Formu	<input checked="" type="checkbox"/> Bilanço
<input type="checkbox"/> Ticaret Sicil Gazetesi	<input type="checkbox"/> SSK Prim Bildirgeleri
<input type="checkbox"/> İmza Sirküleri	<input type="checkbox"/> SSK Makbuzları
<input type="checkbox"/> Sınai Hükümet Beyannamesi	<input type="checkbox"/> SSK İşyeri Bildirgeleri
<input type="checkbox"/> Nüfus Cüzdanı Resimli Sureti (Noter)	<input checked="" type="checkbox"/> Makine Teçhizat Faturaları
<input type="checkbox"/> Dilekçe	<input type="checkbox"/> Tapu/Kira Kontratı (Noter)

Bir sonraki görevli için bilgiler/yorumlar:

Kapat Yardım



Created by: Gaye DAYDAY E-Mail:
gdayday@iso.org.tr Web-Site:



Sicil Özeti Veri Girişleri

Sic. Memurluğu: KADIKÖY Tic. Sic. No: 0000008878

Firma Ünvanı: BSCO DIŞ TİCARET VE TEKSTİL SAN. LTD. ŞTİ.

Paaliyet alanı: CHEMICAL PRODUCTION

Meslek Grubu: ANA KİMYA SANAYİİ

Zümresi: SANAYİDE VE ECZACILIKTA KULLANILAN KİMYEVİ MADDELER İMALİ

Sermaye: 1.000.000.000.00

Üyelik Aidatı

1999 Öz Sermaye:	1.000.000.000 TL	1999 Aidat:	16.000.000 TL
1998 Öz Sermaye:	1.000.000.000 TL	1998 Aidat:	16.000.000 TL
1997 Öz Sermaye:	0 TL	1997 Aidat:	0 TL
			Toplam Aidat: 32.000.000 TL

Tamam İptal Yardım

Created by: Gaye DAYDAY E-Mail: gdayday@iso.org.tr Web-Site: www.iso.org.tr

İşlem ve Firma Onay

Cevabı Seçin

Başvuru işlemlerinde düzeltme
Üyelik başvurusunun kabulü
Üyelik başvurusunun reddi

Sicil Özetine Gözet...

Tamam İptal Yardım

Created by: Gaye DAYDAY E-Mail: gdayday@iso.org.tr Web-Site: www.iso.org.tr

